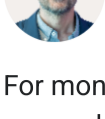




# Tech Decoded

%%=v(@sendTime)=%%



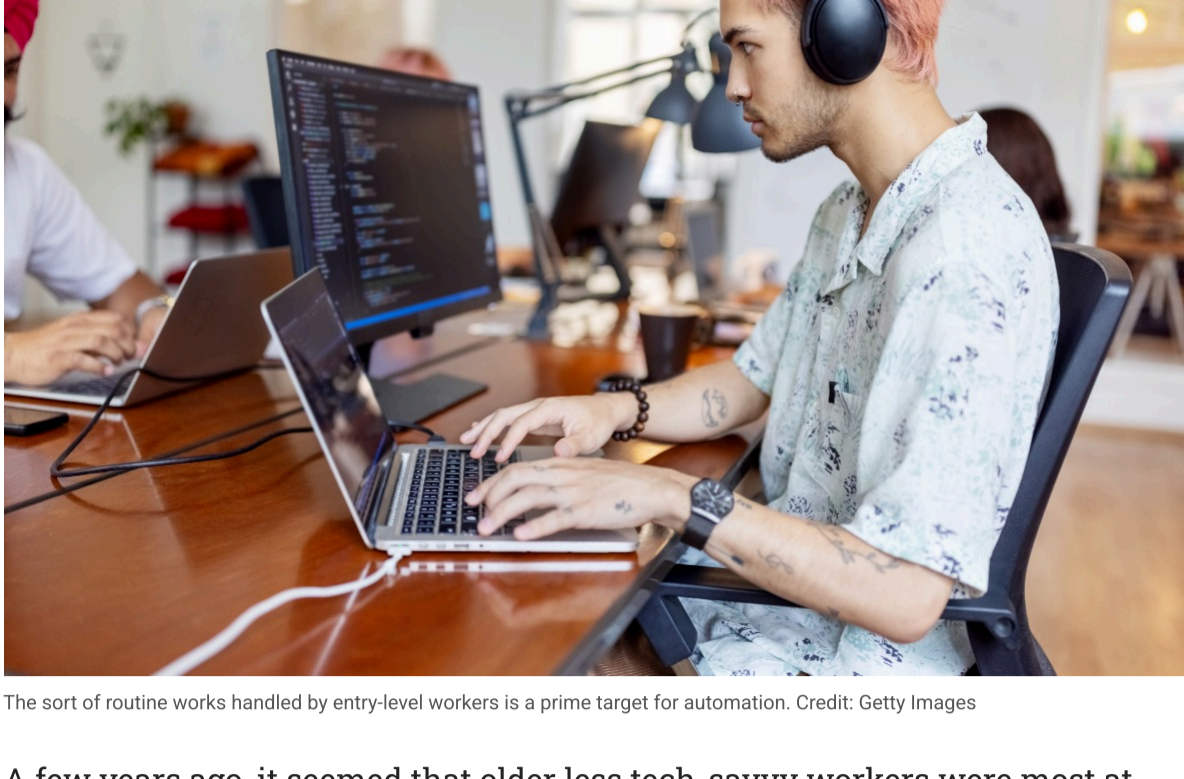
**Daniel Thomas**

Editor, Tech Decoded

For months, we've heard warnings that AI is starting to replace entry-level jobs. And new research from Stanford University offers perhaps the strongest evidence yet for the trend. I ask how worried we should be, and what can be done to protect Gen Z employees. We also visit the Japanese town proposing a two-hour daily limit on smartphones, and speak to people who say they have been unfairly banned from Instagram and Facebook and want answers.

## THE DOWNLOAD

### Why Gen Z may be most at risk from AI



The sort of routine works handled by entry-level workers is a prime target for automation. Credit: Getty Images

A few years ago, it seemed that older less tech-savvy workers were most at risk of losing their jobs to generative AI, but Stanford's latest research suggests the opposite is true.

Drawing its conclusions from the payroll records of millions of American workers, it found that since gen AI went mainstream in late 2022, workers aged 22-25 had seen a 13% fall in employment in the occupations most vulnerable to AI, such as software engineering and customer service. That's after shocks like the Covid pandemic were factored in.

By contrast, employment for workers in less exposed fields - and more experienced workers in the same occupations - "remained stable or continued to grow".

The thought that AI may be squeezing out workers at the very start of their careers is frightening. Clearly, the kind of routine tasks handled by entry-level employees will be easier to automate than those of senior managers. But it raises all sorts of existential questions about the future of work at a time when unemployment for recent US college graduates **is rising**.

Professor Mohanbir Sawhney from the Kellogg School of Management at Northwestern University believes that AI can be a net positive for Gen Z workers as long as it's implemented carefully.

That will require more AI literacy training in schools, universities and workplaces, as well as "reimagining" entry-level work so that the "apprentice years of a young employee's career" are protected, he said.

Whether employers and policymakers are prepared to take these steps remains to be seen - although given the risks, they may end up having no choice.

**The download:** *It seems likely collective action will be necessary to protect younger workers as AI spreads, so expect this topic to climb the political agenda.*

## TOP STORIES



### Web of spammers profiting from AI Holocaust images

Organisations dedicated to preserving the memory of the Holocaust say the fake images are leaving survivors and families distressed.

[Read more >](#)



### Claude says its tech was weaponised by hackers

Anthropic, which makes the chatbot Claude, says its tools were used by hackers "to commit large-scale theft and extortion of personal data".

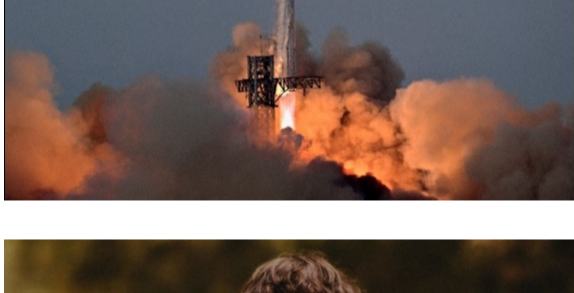
[Learn more >](#)



### Japanese town proposes daily limit on smartphones

The town of Toyoake wants to limit smartphone use for all its 69,000 residents to two hours a day, sparking an intense debate on device addiction.

[Here's why >](#)



### SpaceX pulls off launch in much-needed comeback

Starship, the world's largest and most powerful rocket, blasted off from Texas on Tuesday for a nail-biting 60-minute flight.

[Watch the launch >](#)



### Parents of teen who took his own life sue OpenAI

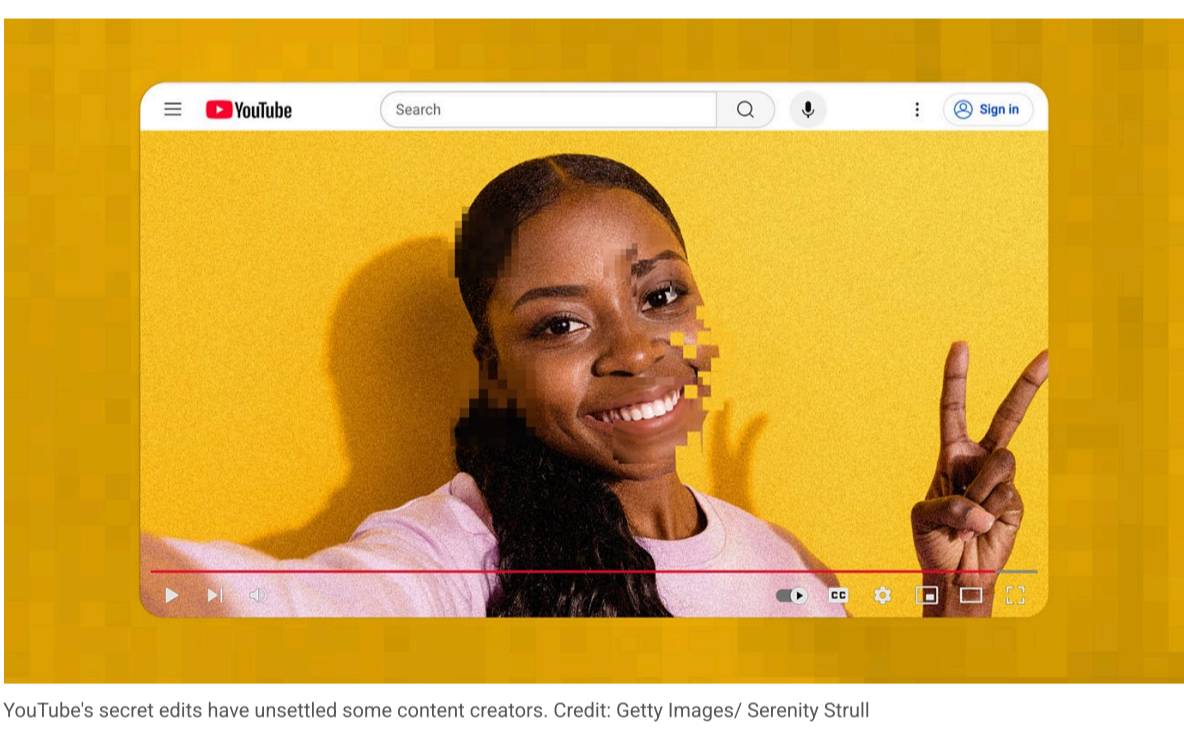
The California couple allege that ChatGPT encouraged 16-year-old Adam Raine to take his own life by validating his "most harmful and self-destructive thoughts".

[Learn more >](#)

Dynamic Element

## SOMETHING DIFFERENT

### How YouTube's AI edits could bend reality



YouTube's secret edits have unsettled some content creators. Credit: Getty Images/ Serenity Strull

In recent months, YouTube has secretly used AI to tweak people's videos without letting them know or asking permission. Wrinkles in shirts seem more defined. Skin is sharper in some places and smoother in others. These changes are small, barely visible without a side-by-side comparison. Yet some disturbed YouTubers say it gives their content a subtle and unwelcome AI-generated feeling. [Read more.](#)

## PODCAST PICK



### What happens when you lose your social media?

We speak to people around the world who say they have been unfairly banned from Facebook and Instagram and are struggling to find out why.

[Listen here](#)

## And finally...

**Preparing for the worst.** Tokyo authorities have released an AI-generated video showing what could happen in a worst-case scenario if Mount Fuji erupted. The BBC's Tessa Wong explains how this **could impact Japan's capital city**, and what experts say about the likelihood of an eruption.

Dynamic Element



### Football Extra newsletter

Get all the latest news, insights and analysis from the Premier League, every weekday to your inbox.

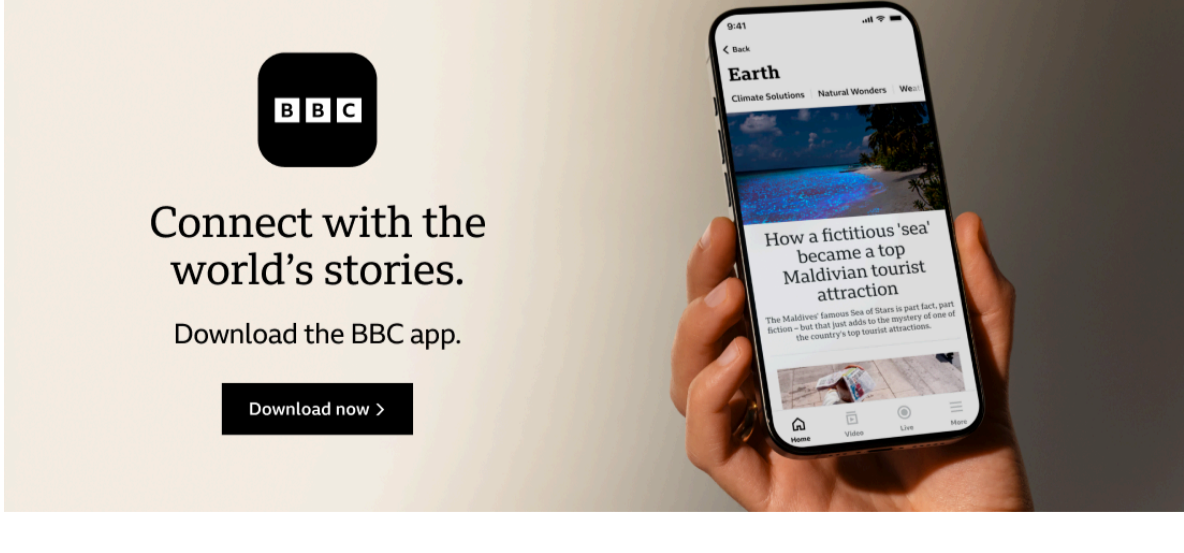
[Sign up here](#)

## MORE BBC NEWSLETTERS

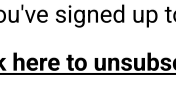
- **World of Business:** Gain the leading edge with global insights for the boardroom and beyond, every Wednesday from New York. [Sign up.](#)
- **The Essential List:** The best of the BBC, handpicked by our editors, in your inbox every Tuesday and Friday. [Sign up.](#)
- **Football Extra:** Get all the latest news, insights and gossip from the Premier League, weekdays to your inbox. [Sign up.](#)

Thanks for reading Tech Decoded. We'd love to hear your feedback, good and bad – send it on to [tech.decoded@bbc.com](mailto:tech.decoded@bbc.com).

If you know anyone who might like this email, please forward it on to them. And if you've been sent this by a friend or colleague, [sign up here so you don't miss an edition](#). While you're at it, add [techdecoded@email.bbc.com](mailto:techdecoded@email.bbc.com) to your contacts list and, if you're on Gmail, pop the email into your "Primary" tab for uninterrupted service.



## Follow us here



You've received this email because you've signed up to the BBC's Tech Decoded newsletter.

[Click here to unsubscribe](#)

To find out how we use your data, see the [BBC Privacy Policy](#)

BBC Studios Distribution Limited.

Registered Number: 01420028 England

Registered office: 1 Television Centre, 101 Wood Lane, London, W12 7FA, United Kingdom

Dynamic Element